

Explore the Arts All Year Long



Door County

Green Bay

Sheboygan ★

Milwaukee

Chicago

Winner of the Governor's 2023 Top Tourism Award



John Michael Kohler Arts Center

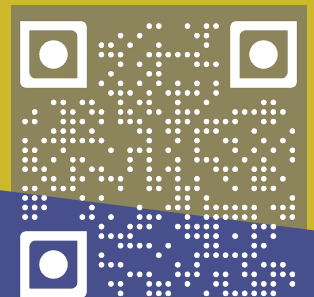
- Changing contemporary art exhibitions
- Onsite café, retail shop, and artist-designed washrooms
- Free self-guided or fee-based docent tours
- Festivals, concerts, and performances



Art Preserve

- First museum dedicated to artist-built environments
- Immersive exhibitions featuring 35+ artists
- Free self-guided or fee-based docent tours
- Artist-designed washrooms and onsite bar

Photo: Durston Saylor



**John Michael
Kohler Arts Center**

608 New York Ave
Sheboygan, WI 53081
+1 920 458 6144
jmkac.org

Top image: Installation view of works by
Nek Chand at the Art Preserve, 2021.



Planning Made Easy

From 8 to 50 People ... Let Us Customize Your Group Tour!

- Convenient location between Milwaukee and Green Bay on Interstate 43
- Changing contemporary art exhibitions at the Arts Center
- World famous collection of artist-built environments at the Art Preserve
- Easy drop-off and ample parking at both locations
- Washrooms located near front entries for easy access
- Large and small spaces (indoors and outdoors) available for dining

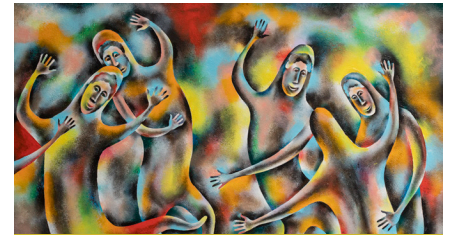
Also enjoy award-winning washrooms, sculpture gardens, ARTspace at the Shops at Woodlake in Kohler, outdoor art installations, James Tellen Woodland Sculpture Garden (5 miles away in Town of Wilson), and more!

Pricing and Fees

- Bus and motorcoach parking is free at both museums
- Free admission for self-tour groups ... please make a reservation
- Docent-led tours are \$10 per person, per location (8-person minimum)
- Hands-on art workshops available starting at \$20/person
- Boxed lunches start at \$16.50/person (includes bottled water), does not include tax and gratuity

Other Items to Know

- Each guest receives a 10% discount at the museum stores
- Museums are ADA compliant and wheelchair accessible
- One hour is recommended per museum—tour one or both museums
- Museums are closed on Mondays
- Free digital marketing kit available with photos and descriptions



What is an Artist-Built Environment?

A unique form of art making encompassing spaces (both indoors and outdoors) that have been significantly transformed by an artist to embody and express aspects of their history, place, or culture.



Festivals & Events

Outdoor live concerts all summer long and the Midsummer Festival of the Arts every July!

Contact

Laura Tymm
ltymm@jmkac.org

jmkac.org

More to Do in Sheboygan County ...

Combine your group tour with other area attractions including gardens, shopping, award-winning dining, trails, museums, theaters, breweries, racetracks, golf courses, and more! VisitSheboygan.com

1 Detail of Beth Lipman's *Wild Maddler* washroom installation at the Art Preserve. 2 Mary Nohl, untitled (detail), n.d.; oil on masonite; 24 x 36 in. John Michael Kohler Arts Center Collection, gift of Kohler Foundation Inc. 3 Midsummer Festival of the Arts.

All information is current as of 01/01/2024.